

# 24m Landing Craft



## PRINCIPAL PARTICULARS

Length Overall:	24.32	metres
Length Waterline:	21.42	metres
Load Line Length:	20.95	metres
Moulded Beam:	8.50	metres
Maximum Draught:	2.57	metres

## CAPACITIES

Fuel Oil:	15,000	litres
Fresh Water:	1,500	litres
Black Water:	1,500	litres
Deck Cargo:	50.00	tonnes
Crew:	3	persons

## MACHINERY

Main Engines:	2 x Doosan V180TIH
Propulsion:	2 x FPP

## PERFORMANCE

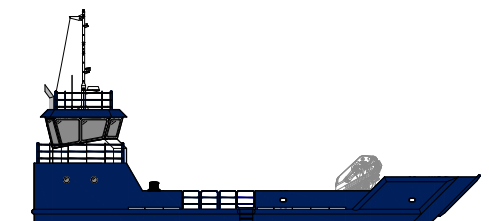
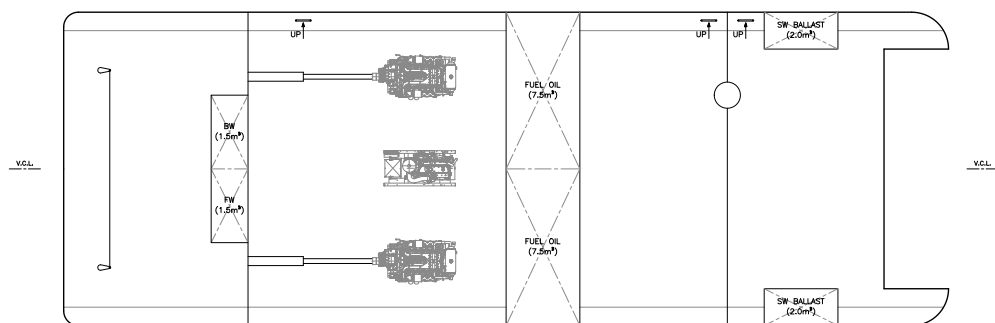
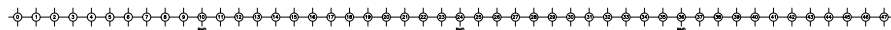
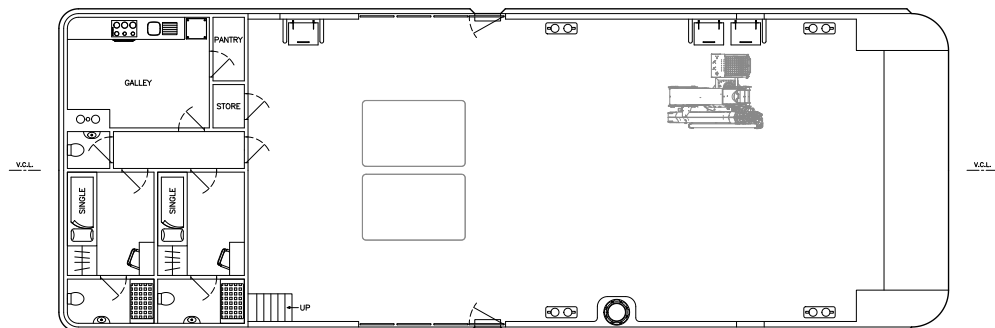
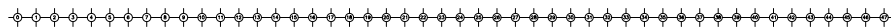
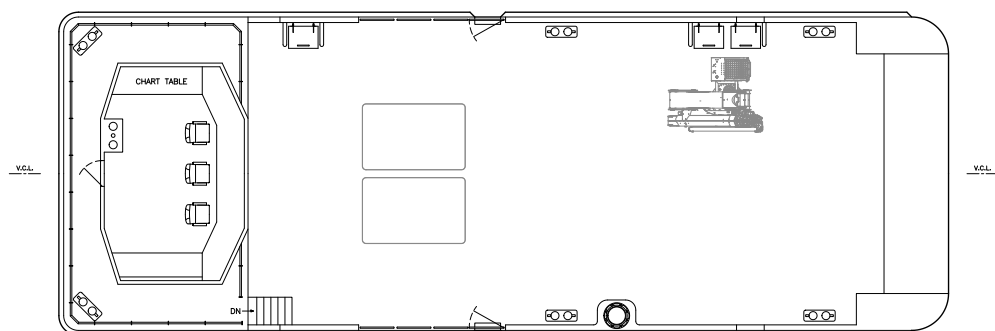
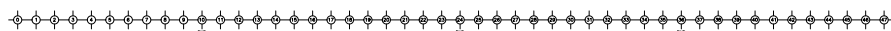
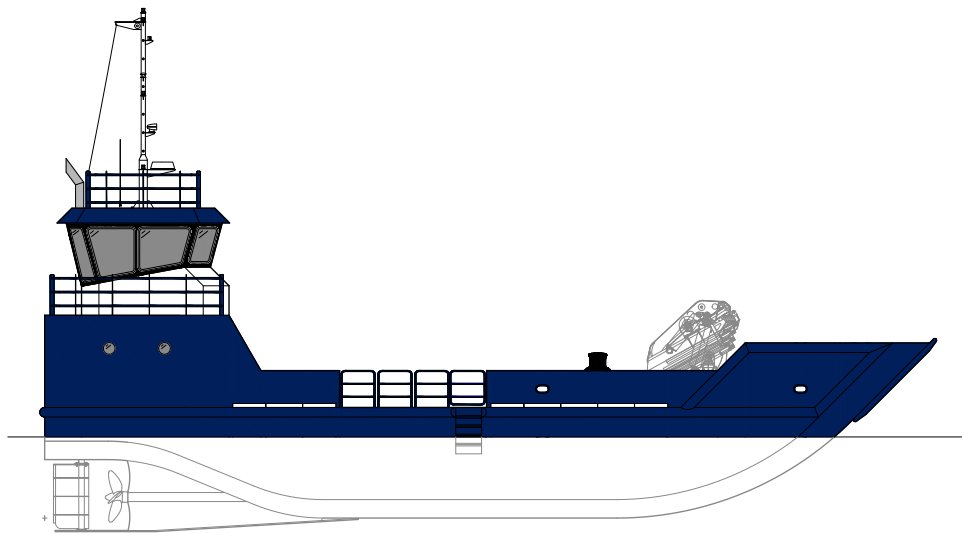
Max. Speed:	10.0	knots
Service Speed:	8.0	knots

## CONSTRUCTION

Steel

## DESIGN STANDARD

TBC



UNCONTROLLED  
COPY  
NOT TO BE USED FOR PRODUCTION